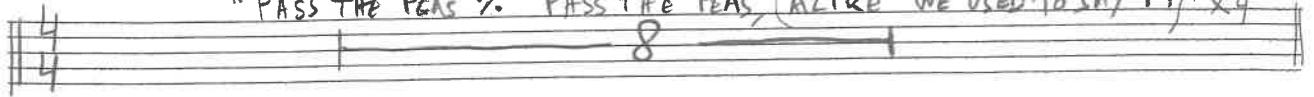


VI FUNK

PASS THE PEAS

(Racir Parker)

"PASS THE PEAS % PASS THE PEAS (ALIKE WE USED TO SAY IT)" x4



BASS LINE

G7

D-7

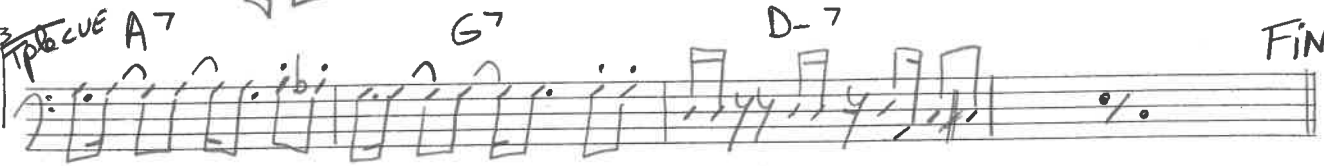


x3 TRIPLE CUE A7

G7

D-7

FINE



5/2

D-7 DRUMS

A7

B RIFF 1 A7 NEW BASS

Solo 1 2



Solo 1 2 D-7 CONTINUES

ON CUE



BASS CONTINUES ad lib ----- D.Sol

ON CUE D-7 RIFF 2 SOUL POWER

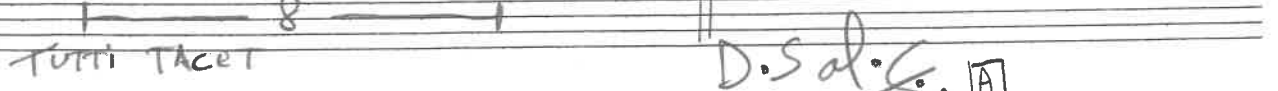
SOLO 3

ON CUE



Ad lib ----- ad lib -----

VOICE "PASS THE PEAS..."



Tutti Tacet

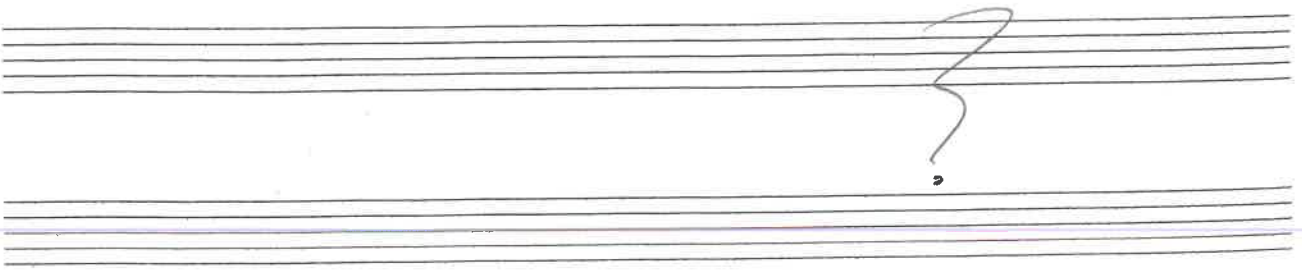
COCOTTES FUNKY GUITAR

N.B : ORGAN SOUND

D.S al. 5/2 A

al Triple Cue

FIN NETTE!



♩ = 120
TR. UT.

$\frac{3}{3}$

DANCE CADAVEROUS

76 $Ab\Delta^7$ $A7sus4$ $A7+b9$ W. SHORTER

$B-\Delta^7$ $C-\Delta^7$ $D\flat\phi^7sus4$ $G\flat^7$

$B-\Delta^7$ $C-\Delta^7$ $G\flat-7$ $B7b9$

$G\Delta^7$ C^7 $C\Delta/E\flat^7$ $Ab-7$

$F\phi^7,9$ $B\flat^7+b9$ $B\flat-7$ $E\flat^7+b9$

$B-\Delta^7+$ $C-\Delta^7+$ $D\flat\phi^7sus4$ $G\flat^7$

$B-\Delta^7+$ $A-7$ D^7 $B\Delta/G\Delta^7$

$D\flat\phi^7$ C^7 $C\Delta/E\flat$ $Ab-7$

$D-7/G$ $D\flat\phi^7$ $G\flat^7$ $C\Delta^7+||$

"SPEAK NO EVIL"

Med. Afro/Latin

Mahjong

Wayne Shorter

$\text{♩} = 164$

VI

OK

Intro F^7_{sus} $E^b6/9$ $(8x's)$

(sample bass line) (bass simile)

A F^7_{sus} $E^b6/9$ F^7_{sus} $E^b6/9$

(ten.) RIFF

F^7_{sus} $E^b6/9$ F^7_{sus} $E^b6/9$

D^bMA^{13} $E^b6/9$ D^bMA^{13} $E^b6/9$

RIFF

D^bMA^{13} $E^b6/9$ D^bMA^{13} $E^b6/9$

Swing $D^7(\#9)$ E^bMI^7 $A^b7(b9)$ D^bMA^7 $C\#MI^7$ $F\#7$

Afro/Latin F^7_{sus} $E^b6/9$ F^7_{sus} $E^b6/9$

F^7_{sus} $E^b6/9$ F^7_{sus} $E^b6/9$

F^7_{sus} $E^b6/9$

Vamp, fill & fade

Head is played twice before and after solos.

Solo on **A**
After solos, D.S. al Coda

RIFF F^7_{sus} $E^b6/9$

$D^b\Delta^{13}$ $E^b6/9$

r r r r r r

$\text{♩} = 106$ VI

1 Tribute to Wayne
3 SD 17 2020

317.

(BALLAD)
~~SWING~~

NEFERTITI

MILES DAVIS

Handwritten musical notation for the first system of 'Nefertiti'. The top staff is in treble clef with a key signature of one flat (Bb) and a 4/4 time signature. The bottom staff is in bass clef and contains chord symbols: Am7(9), Dm7(9), G7(b9), and C7(b9).

Handwritten musical notation for the second system of 'Nefertiti'. The top staff continues the melody. The bottom staff contains chord symbols: Cmaj7, Bb-11, Am7(9), and Eb7(b9).

Handwritten musical notation for the third system of 'Nefertiti'. The top staff continues the melody. The bottom staff contains chord symbols: Em7(9), A7(b9), D7(b9)/Bb, and E7(9).

Handwritten musical notation for the fourth system of 'Nefertiti'. The top staff continues the melody. The bottom staff contains chord symbols: B7(b9), E7(9), and A7(b9). The system ends with a double bar line.

TRIBUTE TO WAYNE

1) Nefertiti

2) Playin'

3) Dance Cadaverous

PIANO

MAMBO INN

MARIO BAUSA

MAMBO 2-3 SON CLAVE ♩=160

INTRO

1 6

2 6

G_m C₇ A_m D₇ G_m C₇ F_{MA7} F_{#m} B₇

3 7

B_b_m E_b₇ A_b_{MA7} G₇(#9) G_b_{MA7} E_{MA7}(#4)

D_m G₇ G_m C₇ D₇(#9)

4 8

G_m C₇ F_{MA7} D₇ G_m C₇ F_{MA7} A_m A_b_m

G_m C₇ A_m D₇ G_m C₇ F

(SOLO FILL INN) TO CODA

COOA